

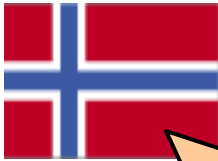
May 15, 2010



2010 Houston International Karate Championships



Presented by:
D.E. & Sharika Chambers
with
Co-producers
USONYA GILDER
JOSHUA REPPOND



Come win your
BIKE!!!



Open to all
styles &
Competitors

Directors:
Derick Quick
Bob Beasley



******Sanctioning/ Rating******
Amateur Organization of Karate- AOK 'A' Rated
Texas Karate Organization-TKO
(AOK Rules will be strictly enforced)

www.northsidekarate.com
sensei@northsidekarate.com
Phone: 281-445-3374

- Grand Championships
Awards and Expense Money
- Black Belt Men Sparring Black Belt Specialty
 - Black Belt Women Sparring Black Belt Forms
 - Black Belt Team Sparring
- Tournament will run straight through
1st place winners in each division!

Tournament starts at 9:00am
Westfield High School
16713 Ella Blvd
Houston, Texas 77090
Early Bird Registration ends March 31, 2010
Pre-Registration ends May 7, 2010

All major credit
cards accepted

More Information and on-line
registrations will be available at
www.northsidekarate.com
Or E-mail us at
sensei@northsidekarate.com

Houston International

2010

Karate Championships

Schedule of Events:

8:00am- 10:30am- On site registration
 8:30am- Opening Ceremony
 8:45am- Rules Meeting
 9:00am- Competition Begins
 (Adult BB Forms, Self-Defense, & Youth Forms)
 All other divisions will begin promptly as judges and rings become available... Please arrive on time.

Tournament Fees:

Discounted Early Bird ends March 31, 2010
 Discounted Pre-Registration ends May 7, 2010
 Deadlines (postmarked) must be met in order to receive discount! No exceptions! Please do not ask!

Tournament Fees	Early Bird Mar 31 st	Pre-Reg May 7 th	Door
1 or 2 events	\$45	\$50	\$55
Additional Events	\$10	\$15	\$18
Jr Team Sparring (per person)	\$5	\$7	\$10
Team Sparring	\$50	\$60	\$75
Adult Spectators	\$8	\$10	\$12
Child Spectators (5 –under)	\$5	\$6	\$7

\$\$\$ SAVE MONEY... REGISTER EARLY \$\$\$

Tournament Location:

Westfield High School
 16713 Ella Blvd
 Houston, Texas 77090

****Required Equipment: Soft, foam type equipment and mouthpieces are mandatory in all divisions. Men/Boys must wear groin protectors. Regulation Karate/Kung Fu uniforms must be worn with sleeves reaching the elbows. Foam type headgear is a must and will be worn by all competitors.*

Tournament Hotel:

Comfort Suites
 150 Overland Trail
 Houston, TX 77090
 Reservations 281-440-4448
 Request: Houston International Karate Championship
 To reserve a room please call before 3pm ask for Amanda

TOURNAMENT DIRECTIONS

From Dallas: 1-45 south exit Richey Rd. Turn right on Richey Rd. When you get to Ella Blvd., make a right. Continue until you see the school it will be on your left.

From San Antonio: 1-10 East to 1-45 North. Exit Richey Rd. turn left. When you get to Ella Blvd., make a right. Continue until you see the school; it will be on your left.

From Austin: 290- exit 45 north. Exit Richey Rd. Turn left. When you get to Ella Blvd., make a right. Continue until you see the school; it will be on your left.

From Galveston: 1-45 North . Exit Richey Rd. turn left. When you get to Ella Blvd., make a right. Continue until you see the school; it will be on your left.

From Beaumont: 1-10 West to 1-45 North Exit Richey Rd. turn left. When you get to Ella Blvd., make a right. Continue until you see the school; it will be on your left.

DIVISIONS

<p>F0 - Physically Challenged, All Ranks F1 - 5-Under Boys/Girls, All Ranks F2 - 6-7 Beginner Boys/Girls F3 - 6-7 Intermediate Boys/Girls F4 - 6-7 Advanced Boys/Girls F5 - 8-9 Beginner Boys/Girls F6 - 8-9 Intermediate Boys/Girls F7 - 8-9 Advanced Boys/Girls F8 - 10-11 Beginner Boy s/Girls F9 - 10-11 Intermediate Boys/Girls F10 - 10-11 Advanced Boys/Girls F11 - 10-11 Black Belt Boys/Girls F12 - 12-13 Beginner Boys/Girls F13 - 12-13 Intermediate Boys/Girls F14 - 12-13 Advanced Boys/Girls F15 - 12-13 Black Belt Boys/Girls F16 - 14-15 Beginner Boys/Girls F17 - 14-15 Intermediate Boys/Girls F18 - 14-15 Advanced Boys/Girls F19 - 14-15 Black Belt Boys/Girls F20 - 16-17 Beginner Boys/Girls F21 - 16-17 Intermediate Boys/Girls F22 - 16-17 Advanced Boys/Girls F23 - 16-17 Black Belt Boys/Girls F24 - Adult Men 18+ Beginner F25 - Adult Men 18+ Intermediate F26 - Adult Men 18+ Advanced</p>	<p>F27 - Adult Women 18+ Beginner F28 - Adult Women 18+ Intermediate F29 - Adult Women 18+ Advanced F30 - Exec. Men 35+ Beginner F31 - Exec. Men 35+ Intermediate F32 - Exec. Men 35+ Advanced F33 - Exec. Women 32+ Beginner F34 - Exec. Women 32+ Intermediate F35 - Exec. Women 32+ Advanced F36 - Black Belt Men, Open Style F37 - Black Belt Women, Open Style F38 - Black Belt Weapons (M/W) F39 - Black Belt Soft Style (M/W) F40 - Black Belt Self-Defense (M/W) F41 - Black Belt Specialty (M/W) F42 - Black Belt Exec. Men 35+ F43 - Black Belt Exec. Women 32+ F44 - Black Belt Sr. Exec. 45+ (M/W) F45 - Black Belt Traditional (M/W) F46 - Jr. Specialty Beginner F47 - Jr. Specialty Intermediate F48 - Jr. Specialty Advanced F49 - Jr. Specialty Black Belt F50 - Jr. Team Specialty, All Ranks F51 - Adult Amateur Specialty, All Ranks F52 - Adult Team Specialty, All Ranks</p>	<p style="text-align: center;">NO AOK POINTS FOR DIVISIONS BELOW (F53 – F69)</p> <p>F53 - 7-Under Boys/Girls, All Ranks F54 - 8-10 Beginner Boys/Girls F55 - 8-10 Intermediate Boys/Girls F56 - 8-10 Advanced Boys/Girls F57 - 8-10 Black Belt Boys/Girls F58 - 11-14 Beginner Boys/Girls F59 - 11-14 Intermediate Boys/Girls F60 - 11-14 Advanced Boys/Girls F61 - 11-14 Black Belt Boys/Girls F62 - 15-17 Beginner Boys/Girls F63 - 15-17 Intermediate Boys/Girls F64 - 15-17 Advanced Boys/Girls F65 - 15-17 Black Belt Boys/Girls F66 - Adults Beginner/Intermediate (M/W) F67 - Adults Advanced (M/W)</p> <p style="text-align: center;">2008 New Division</p> <p>F68 – Master Division 60+ F69 – Demo Division 12 under (everyone wins)</p>
---	---	--

SPARRING/ KUMITE DIVISIONS

<p>S1 - 5-Under Boys/Girls, All Ranks S2 - 6-7 Beginner Boys S3 - 6-7 Intermediate Boys S4 - 6-7 Advanced Boys S5 - 6-7 Beginner Girls S6 - 6-7 Intermediate Girls S7 - 6-7 Advanced Girls S8 - 8-9 Beginner Boys S9 - 8-9 Intermediate Boys S10 - 8-9 Advanced Boys S11 - 8-9 Beginner Girls S12 - 8-9 Intermediate Girls S13 - 8-9 Advanced Girls S14 - 10-11 Beginner Boys S15 - 10-11 Intermediate Boys S16 - 10-11 Advanced Boys S17 - 10-11 Black Belt Boys S18 - 10-11 Beginner Girls S19 - 10-11 Intermediate Girls S20 - 10-11 Advanced Girls S21 - 10-11 Black Belt Girls S22 - 12-13 Beginner Boys S23 - 12-13 Intermediate Boys S24 - 12-13 Advanced Boys S25 - 12-13 Black Belt Boys</p>	<p>S26 - 12-13 Beginner Girls S27 - 12-13 Intermediate Girls S28 - 12-13 Advanced Girls S29 - 12-13 Black Belt Girls S30 - 14-15 Beginner Boys S31 - 14-15 Intermediate Boys S32 - 14-15 Advanced Boys S33 - 14-15 Black Belt Boys S34 - 14-17 Beginner Girls S35 - 14-17 Intermediate Girls S36 - 14-17 Advanced Girls S37 - 14-17 Black Belt Girls S38 - 16-17 Beginner Boys S39 - 16-17 Intermediate Boys S40 - 16-17 Advanced Boys S41 - 16-17 Black Belt Boys S42 - Adult Men 18+ Lightweight Beg. S43 - Adult Men 18+ Lightweight Int. S44 - Adult Men 18+ Lightweight Adv. S45 - Adult Men 18+ Middleweight Beg. S46 - Adult Men 18+ Middleweight Int. S47 - Adult Men 18+ Middleweight Adv. S48 - Adult Men 18+ Heavyweight Beg. S49 - Adult Men 18+ Heavyweight Int. S50 - Adult Men 18+ Heavyweight Adv.</p>	<p>S51 - Exec. Men 35+ Beginner S52 - Exec. Men 35+ Intermediate S53 - Exec. Men 35+ Advanced S54 - Adult Women 18+ Beginner S55 - Adult Women 18+ Intermediate S56 - Adult Women 18+ Advanced S57 - Exec. Women 32+ Beginner S58 - Exec. Women 32+ Intermediate S59 - Exec. Women 32+ Advanced S60 - Black Belt Men Lightweight S61 - Black Belt Men Middleweight S62 - Black Belt Men Heavyweight S63 - Black Belt Exec. Men Lightweight S64 - Black Belt Exec. Men Heavyweight S65 - Black Belt Sr. Exec. Men 45+ S66 - Black Belt Women Flyweight S67 - Black Belt Women Lightweight S68 - Black Belt Exec. Women 32+</p> <p style="text-align: center;">2009 New Division</p> <p>S69 – Master Division 60+</p>
---	--	---

Some divisions' alignments will not go in the order of pre-registrations
Competitors in multi divisions competing simultaneously may receive a bye

Weight Class - Black Belt Womer.
Flyweight – 125 lbs. & Under
Lightweight – 126 lbs. & Over

Weight Class - Men
Lightweight – 160 lbs. & Under
Middleweight – 161 lbs –185 lbs.
Heavyweight – 186 lbs. & Over

Weight Class - Executive Men
Lightweight – 185 lbs. & Under
Heavyweight – 186 lbs. & Over

CONTINUOUS SPARRING DIVISIONS

<p>N83 - 17–, Feather (77-) (M/F) N84 - 17–, Light (88-) (M/F) N86 - 17–, Middle (121-) (M) N88 - 17–, Heavy (165-) (M)</p>	<p>N89 - 17–, Super Hvy (165+) (M) N93 - 18+, Feather (138.6-) (M) N94 - 18+, Light (151.8-) (M) N96 - 18+, Middle (173.8-) (M)</p>	<p>N98 - 18+, Heavy (200.2-) (M) N99 - 18+, Super Hvy (200.2+) (M) N100 -18+, Feather (132-) (F) N101 -18+, Light (132+) (F)</p>
--	--	---

TEAM SPARRING DIVISIONS

<p>T1 – 5-Under, 6-7, 8-9 T2 – 8-9, 10-11, 12-13 T3 – 12-13, 14-15, 16-17</p>	<p>T4 – Adult Underbelts T5 – Black Belt Grand Champion Team</p>	<p>All Ranks. All teams must include the specified age participants.</p>
---	---	--

REGISTRATION FORM ♦ HOUSTON INTERNATIONAL CHAMPIONSHIPS

PRE-REGISTRATION PRICES ARE AVAILABLE THROUGH MAY 7, 2010

Competitor Information

Check One

NAME: _____ RANK: *BEG* *INT* *ADV* *Black Belt*

ADDRESS: _____ PH. (Hm): _____ - _____ - _____ Cell: _____ - _____ - _____

CITY: _____ STATE: _____ ZIP: _____

BIRTHDATE: _____ AGE: _____ SEX: _____ HEIGHT: _____ WEIGHT: _____

E-MAIL: _____ INSTRUCTOR: _____

Club/School Information

SCHOOL NAME: _____ PHONE: _____

ADDRESS: _____ CITY: _____ STATE: _____ ZIP: _____

Liability Wavier: The participant agrees to comply with the rules of the Amateur Organization of Karate and acknowledges that competition in the Houston International Karate Championship Tournament is physical and participation in such competition can result in injury to a participant. The participant hereby waives any claim of damages or injury against the Houston International Karate Championship Tournament, North Side Karate, the Amateur Organization of Karate, or any of its officers, agents, employees or any individual connected with the organization or promotion of the Houston International Karate Championship Tournament and expressly assumes all risks of whatever nature resulting from participation. Additionally, I am fully aware of my personal medical conditions and hereby certify that I am mentally and physically fit to compete in said karate tournament. Lastly, I hereby waive any compensation whatsoever for use of pictures, videotape, media coverage, statements, interviews, etc., utilized by those producing or directing this event at any time, and applicable media.

Competitor Signature

Parent/Guardian (if under 18)

Date

NOT RESPONSIBLE FOR LOST OR DELAYED MAIL!!!

Divisions
<i>Please fill in the DIVISION NUMBER for all divisions entered</i>
Kata: _____
Sparring: _____
Specialty: _____
Team Spar: _____
Continuous Spar: _____
Other: _____
Other: _____

Tournament Fees	Early Bird	Pre-Reg	Door	Total \$
1 or 2 Events	\$45	\$50	\$55	
Additional Events	\$10 x _____	\$15 x _____	\$18 x _____	
Jr. Team Sparring (per person)	\$5	\$7	\$10	
Team Sparring	\$50	\$60	\$75	
Adult Spectators	\$10 x _____	\$12 x _____	\$15 x _____	
Child Spectators (5-under)	\$5 x _____	\$6 x _____	\$7 x _____	
T-Shirt Size	\$10 x _____	\$12 x _____	\$15 x _____	
Ch 6/8 Ch 10/12 Ch 14/16				
Sm Med Lg XL XXL				
Demo Team	\$25	\$35	\$48	
TOTAL FEES				\$

PAYMENT INFORMATION:
 Make checks or money orders payable to N.S.K.
 Mail payments to: **North Side Karate**
1100 Greens Pkwy, Suite 480
Houston, Texas 77067
 ***No personal checks accepted at the door
 ***Only US Currency, Travelers Checks, or Money Orders
 ***No Refunds, No Transfers, No substitutions

Credit Card Payments
MC _____ VISA _____ DISCOVER CARD _____
_____ Name on card (please print)
_____ Card Number
Exp. Date: _____ I authorize N.S.K. to charge the above card no. in the amount applicable for the registration form.
_____ Signature

**Come Advertise Your Business!!!
Booth Rental is available at \$200.00**

The Houston International Tournament will be held in three spacious gyms

For additional information or fliers, please contact North Side Karate at: (281) 445-3374 or via e-mail Sensei@northsidekarate.com